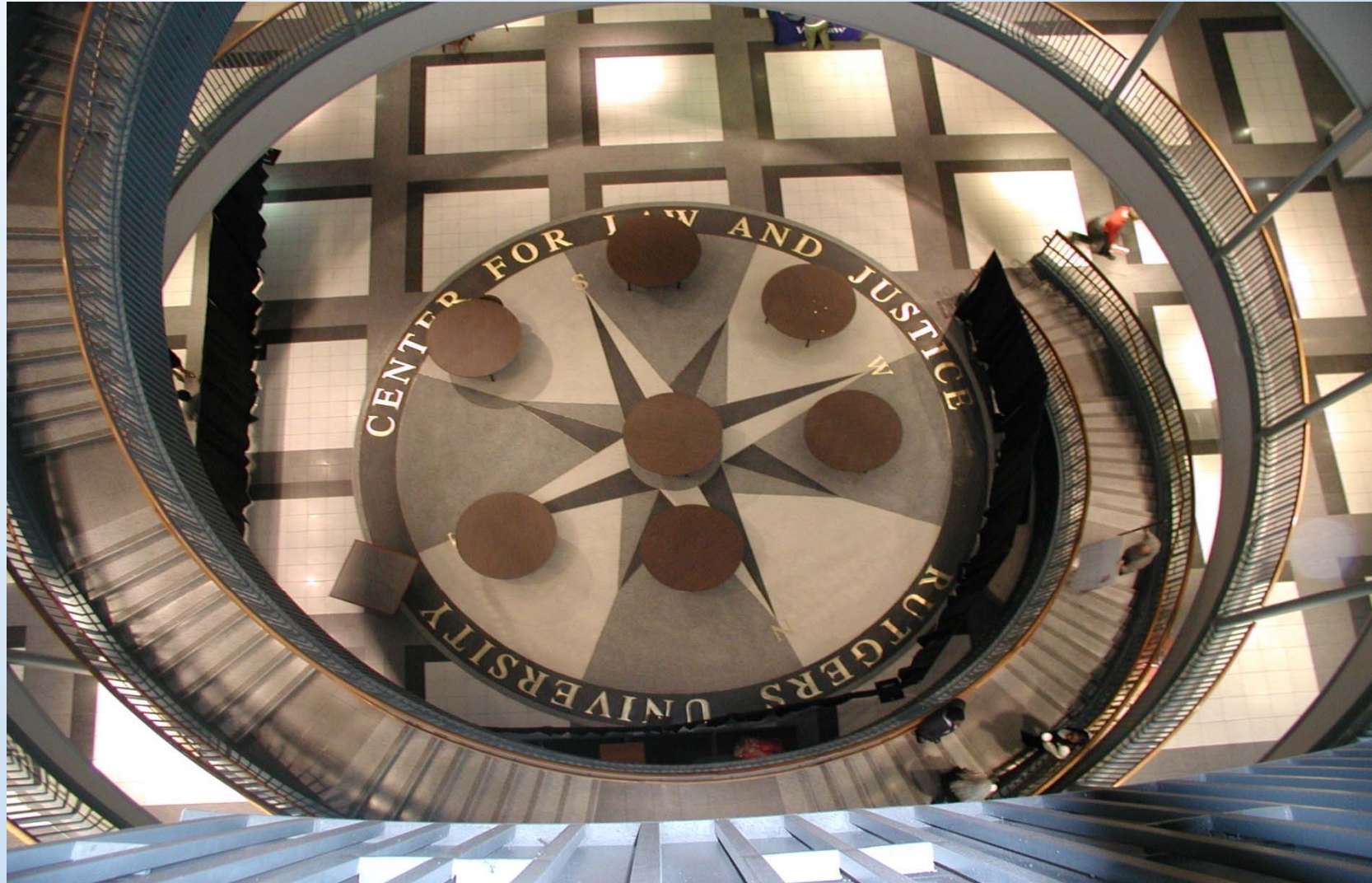


情绪对感知觉过程的影响

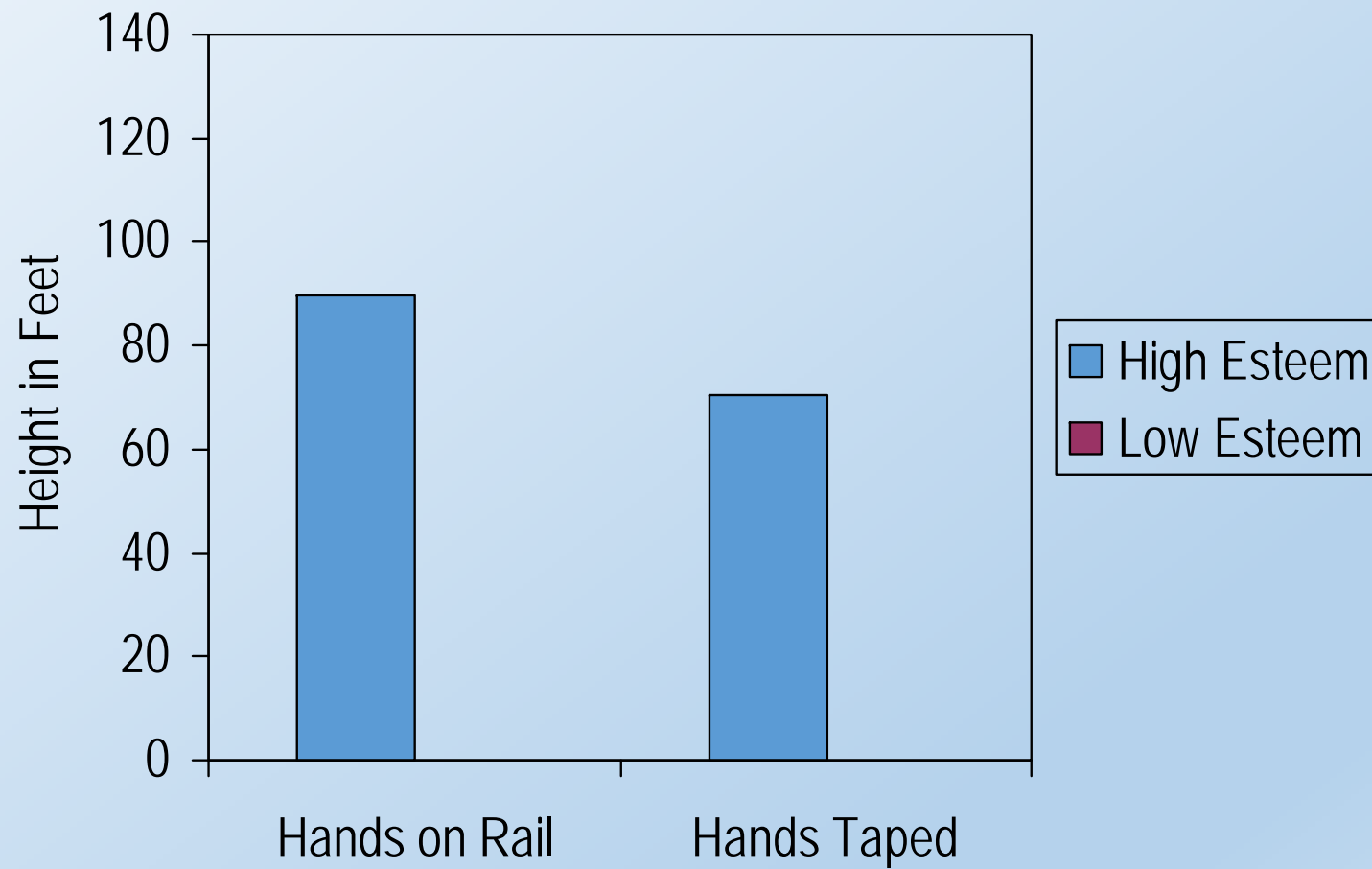
Self Esteem, External Support, and Height Judgments

Harber, Iacovelli, & Yeung, 2012 (Study 2)





估计高度



Scuba Diver Study



学习阶段

Glom

Wilg

Lavs

测试阶段

岸上 学习

水下学习

岸上回忆

好

差

水下回忆

差

好

情绪记忆研究

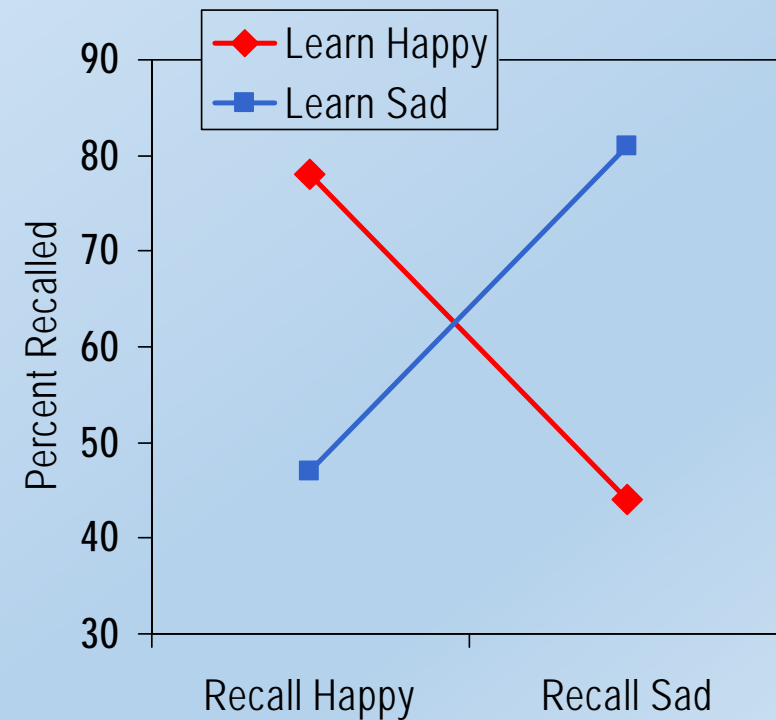
1. 记忆16个积极情绪词汇, 然后记忆16个消极情绪词汇

2. 一段时间之后测试

3. 引发被试的积极或消极情绪



4. 让被试分别回忆积极或消极词语.



情绪与注意 – 积极 大，消极 局部

MM

MM

MM

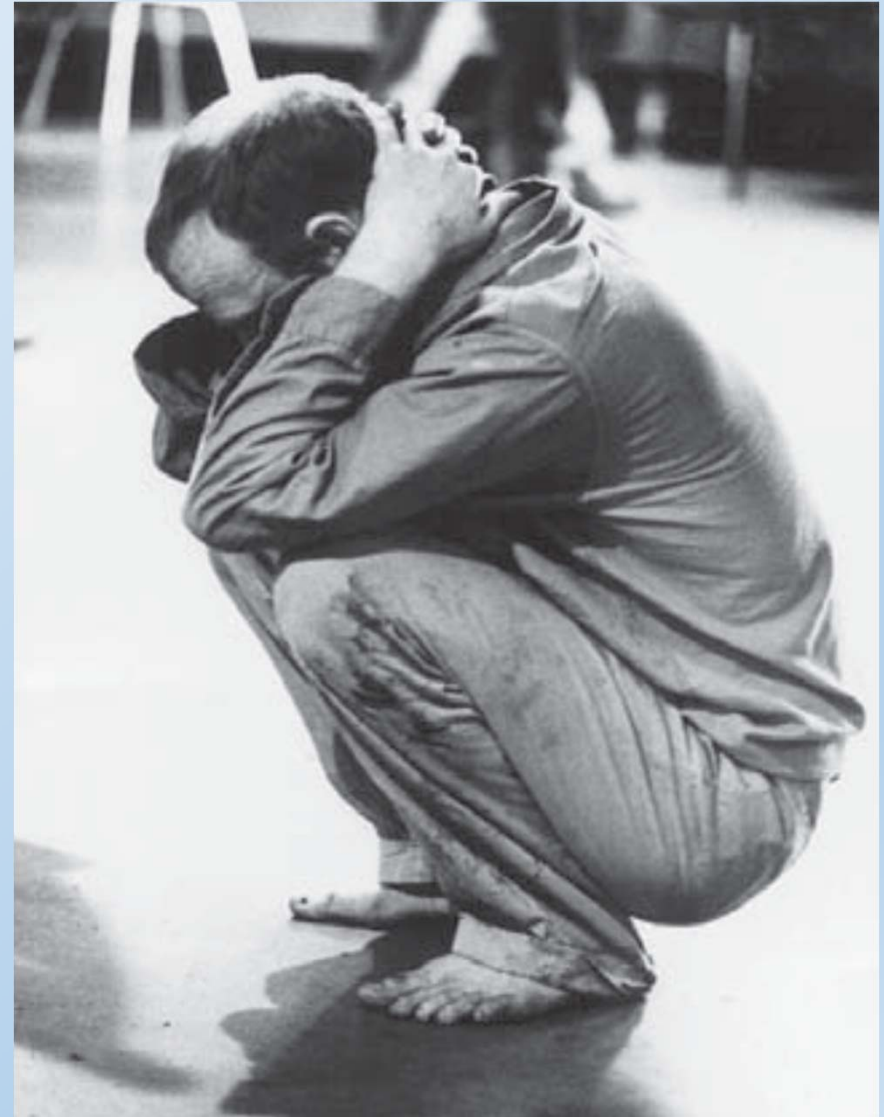
MM

MM MM MM



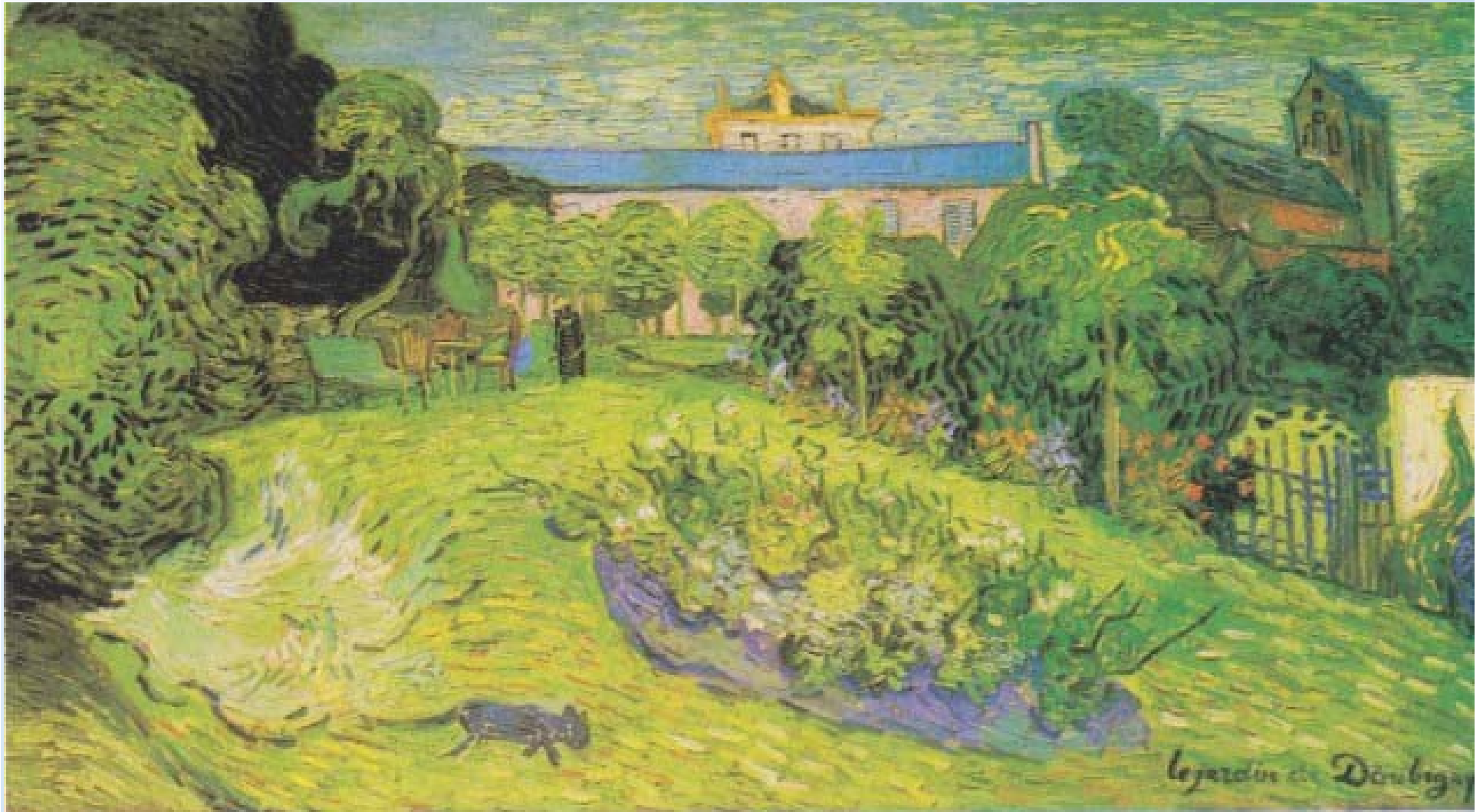
Louis Wain (5 August 1860 – 4 July 1939)

So,





Wheatfield with Crows,
Vincent Van Gogh



Daubigny's Garden

Vincent Van Gogh



Riding with Death,

Jean-Michel Basquiat



Constance Mayer
& Pierre-Paul Prud'hon



Le Concert

Nicolas De Stael



Untitled (Black On Gray)

Mark Rothko



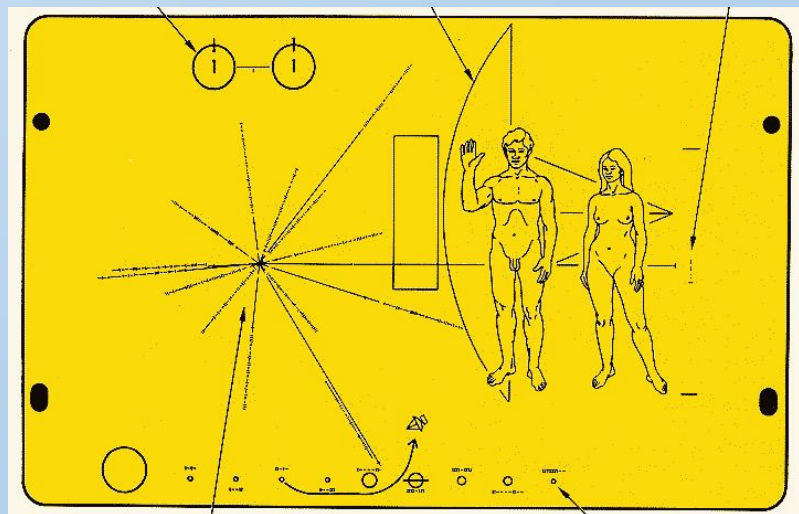
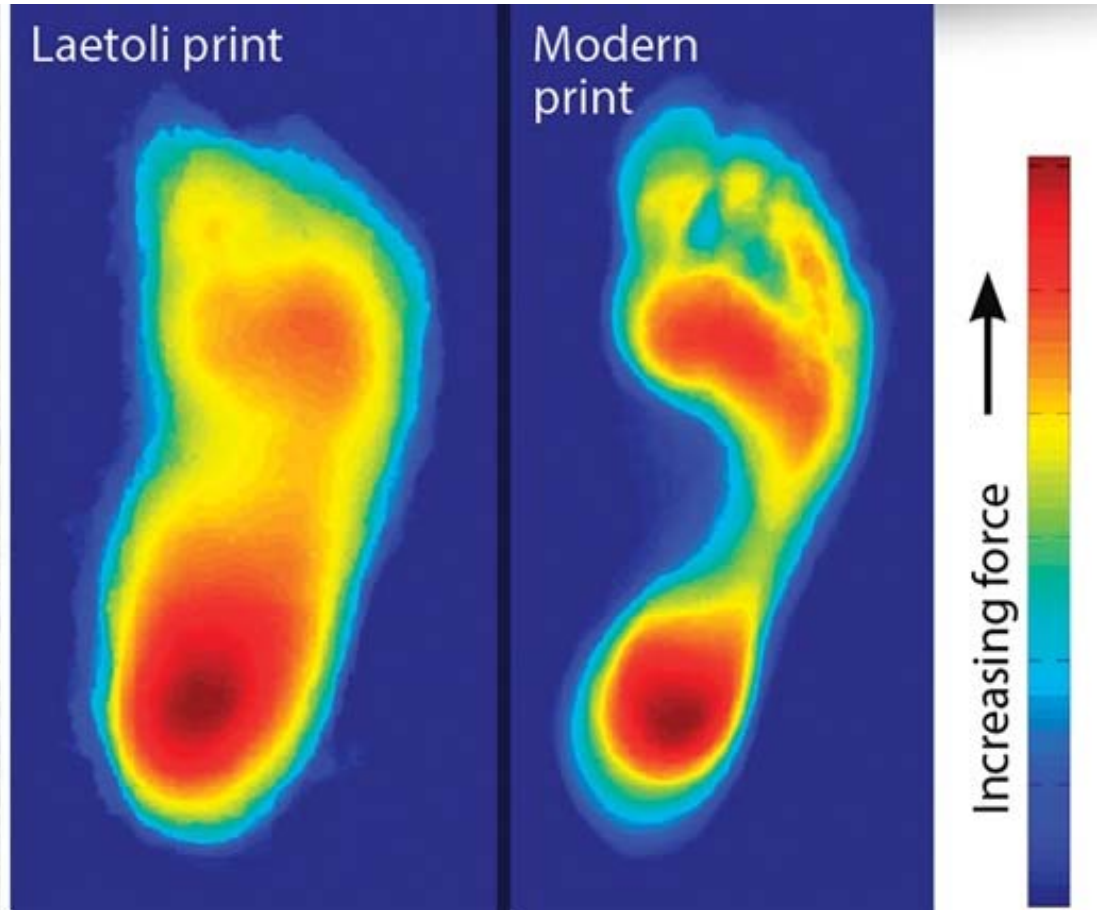
情绪与性

**Laetoli Hominin fossil footprints,
Laetoli , Tanzania
3.7 million years**



Laetoli print

Modern print





Susanna and Elder 苏珊娜与年长者

圣经故事;

大概是中世纪几百年唯一可以合理流传的裸体艺术
持久不衰~





但是为什么是这个故事？

作业~~



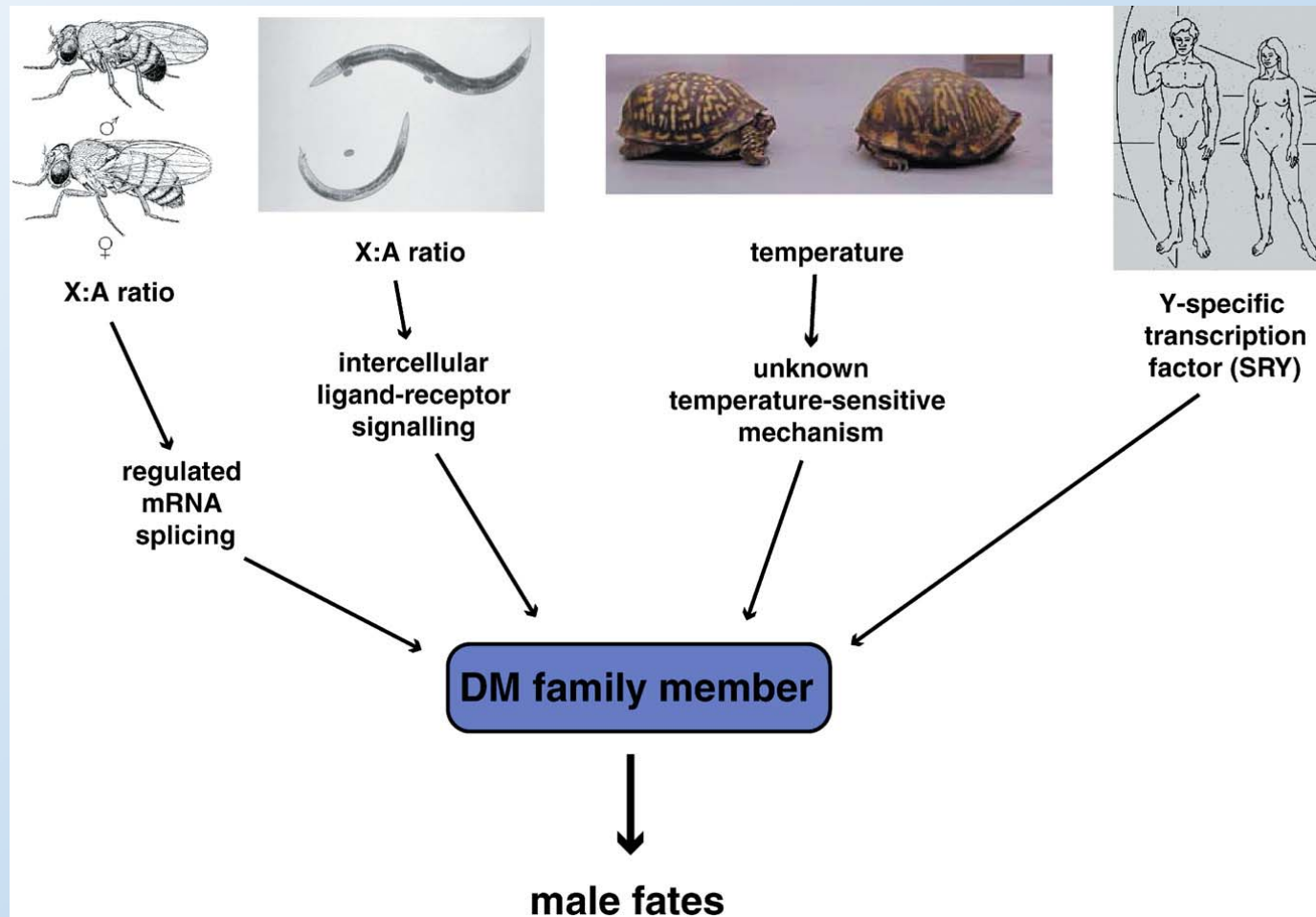
性与情绪

- 性别根据什么而定义
- 不同性别之间的相互关系如何建立？
- 与性相关的情绪，如吸引力和偏好，如何形成？
- 性别差异.

1. 性别的定义

- 性别的确定
- 生育投资的概念.

多种性别定义方式

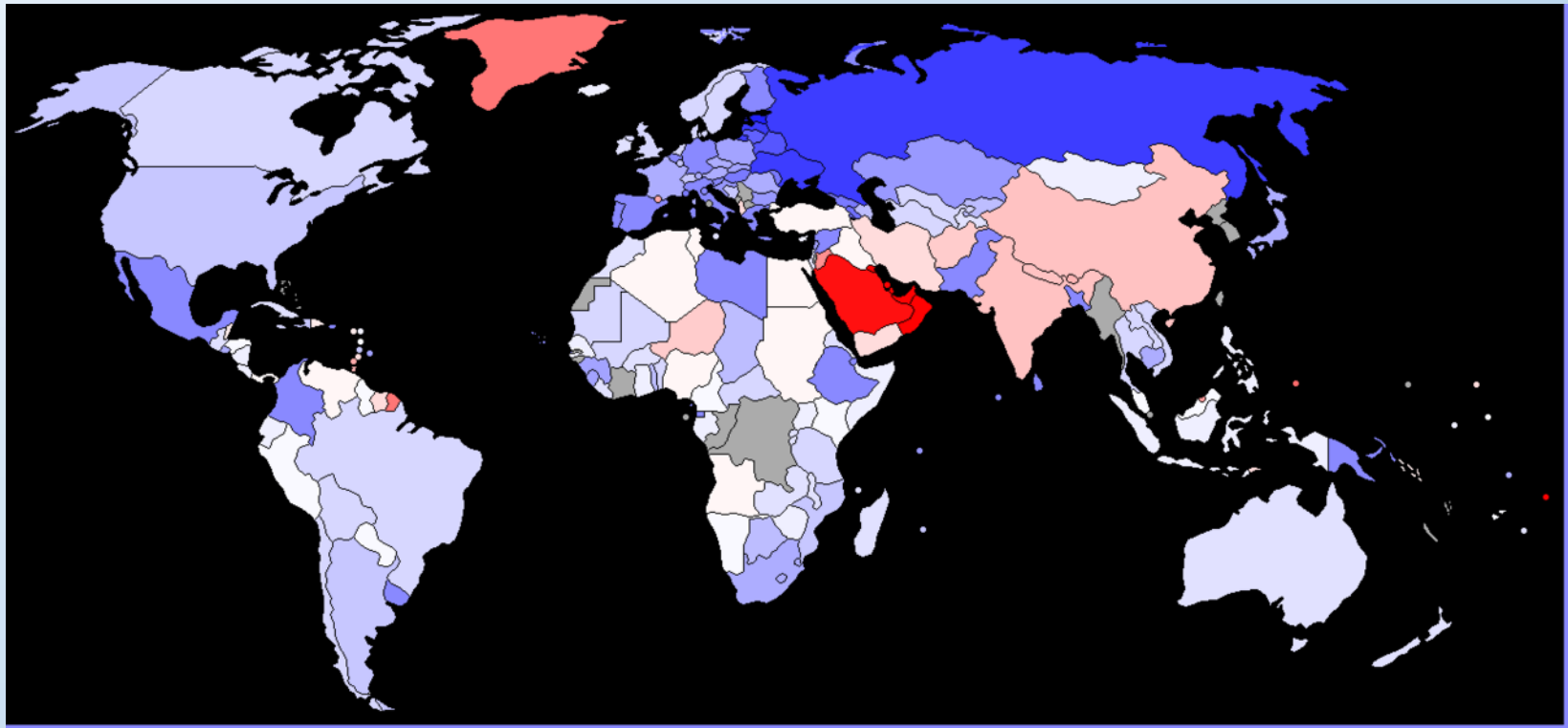


Haag ES1, Doty AV. Sex determination across evolution: connecting the dots. PLoS Biol. 2005 Jan;3(1):e21.

人类

- 自然出生率 Boy/girl = 1.06

Girl more than boy

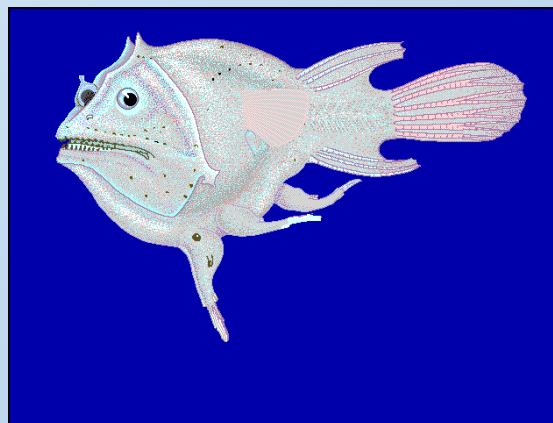


Grech, V; Savona-Ventura, C; Vassallo-Agius, P (2002). "Unexplained differences in sex ratios at birth in Europe and North America". BMJ (Clinical research ed.). 324 (7344): 1010

Mating system



	Single female	Multiple females
Single male	<u>Monogamy</u>	<u>Polygyny</u>
Multiple males	<u>Polyandry</u>	<u>Polygynandry</u>



基本原则

- 性细胞大小不一
- 对于提供小的性细胞的一方，最好的策略是：尽可能多的交配，尽可能少的投资
- 有一个问题: other male,
- 体型大小与生育投资显著相关

Men vs women

- Men were more aggressive
- Men were more mean to others
- Men are less social
- Men want more sex

2 不同性别之间的相互作用模式

- 性选择Sex selection.
- 不同性别之间，为了生育而合作，但是二者的兴趣所在不同
- 竞争大于合作
- male/male and female/male



The Fraternal Kiss

My God, Help Me to Survive This Deadly Love

In Berlin wall by Dmitri Vrubel

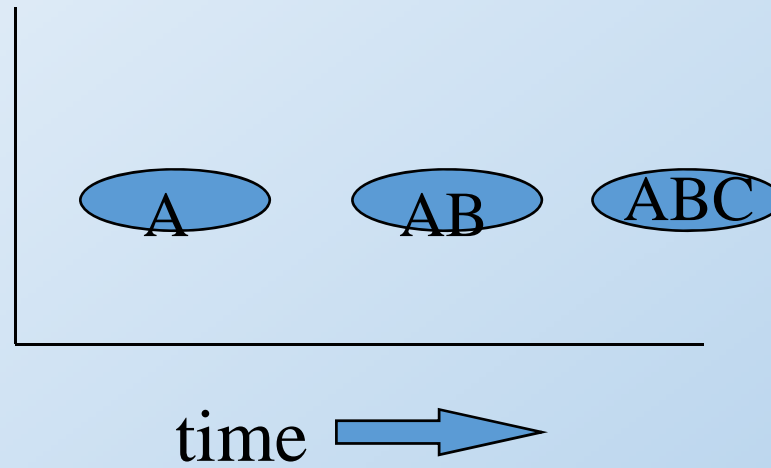




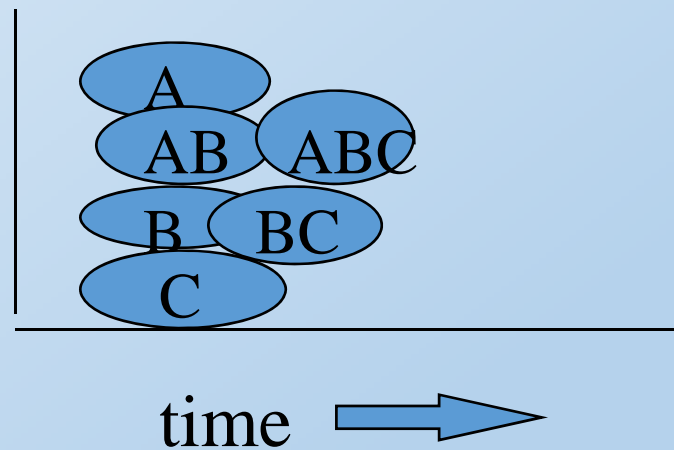
Fisher-Muller Hypothesis

有性生殖的适应性意义
使得群体更加均一,扩大适应性

Asexual

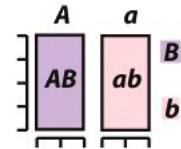


Sexual

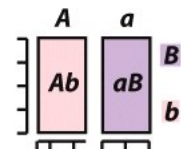


Starting chromosome frequencies
for two populations

Freq. of: $\begin{matrix} A \\ B \end{matrix} = 0.5$ $\begin{matrix} a \\ B \end{matrix} = 0$
 $\begin{matrix} A \\ b \end{matrix} = 0$ $\begin{matrix} a \\ b \end{matrix} = 0.5$



Starting chromosome frequencies
for another
two populations

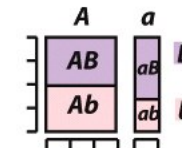


Freq. of: $\begin{matrix} A \\ B \end{matrix} = 0$ $\begin{matrix} a \\ B \end{matrix} = 0.5$
 $\begin{matrix} A \\ b \end{matrix} = 0.5$ $\begin{matrix} a \\ b \end{matrix} = 0$

Esterase-c: A, a
 Esterase-6: B, b



Average final
chromosome frequencies
across all populations



Freq. of: $\begin{matrix} A \\ B \end{matrix} = 0.38$ $\begin{matrix} a \\ B \end{matrix} = 0.17$
 $\begin{matrix} A \\ b \end{matrix} = 0.36$ $\begin{matrix} a \\ b \end{matrix} = 0.09$

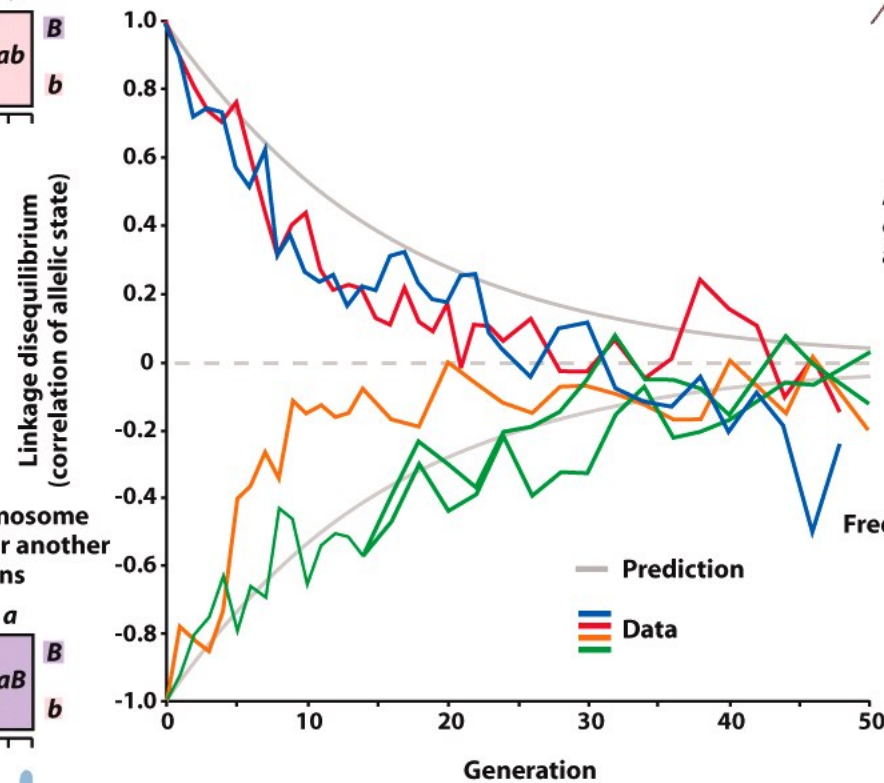


Figure 8-7 Evolutionary Analysis, 4/e
 © 2007 Pearson Prentice Hall, Inc.

吸引 | Attraction



吸引 | Attraction



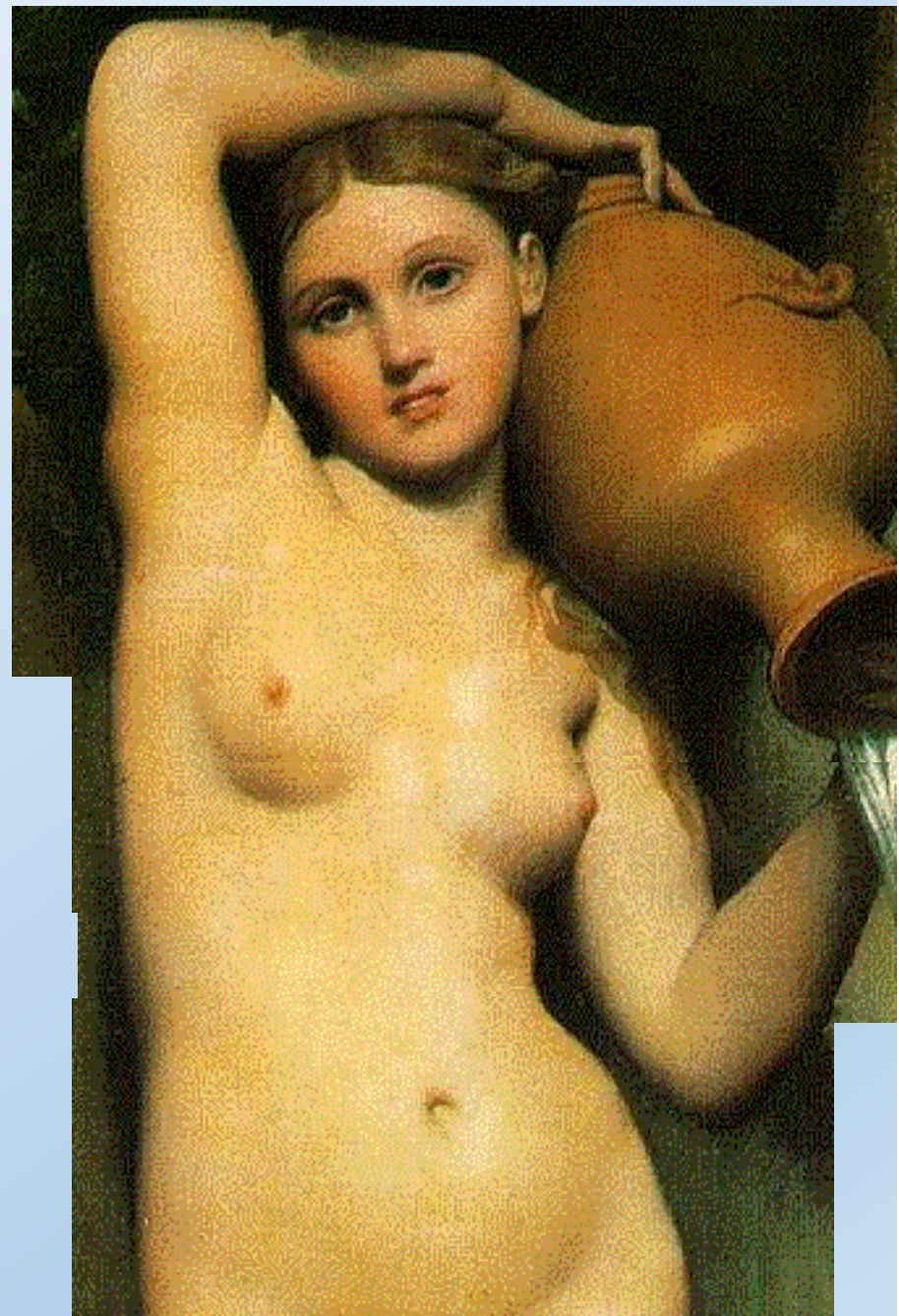
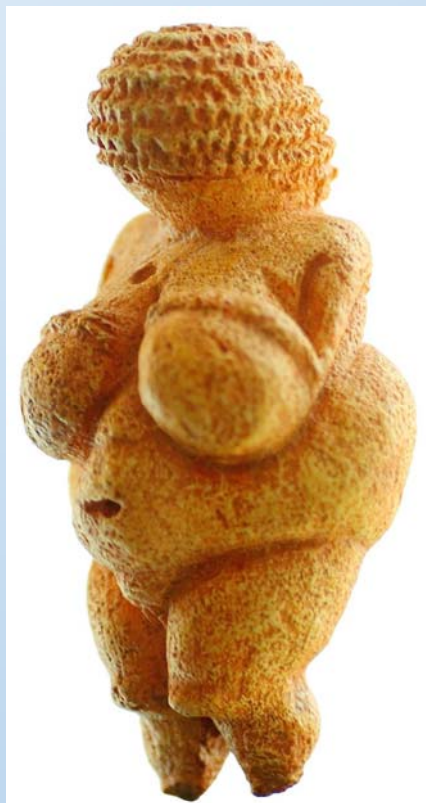
吸引 | Attraction



漂亮= 健康

年轻
皮肤完整
嘴唇
生殖标志

健康
经济状况
身高
对称性



对称与无缺陷



对称与无缺陷



不是所有的可爱都与性有关~



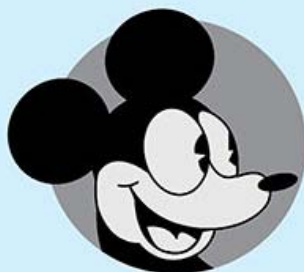


米老鼠的演进:

90 years

细节

PLANE CRAZY



DATE: 1928

FUN FACT: The first Mickey Mouse cartoon ever produced. Mickey is not wearing his classic shoes or gloves in this short.

MICKY MOUSE



DATE: October 3, 1955—March 7, 1996

FUN FACT: Disney's live-action variety show for kids aired on ABC, featuring the Mouseketeers. The ear hats, worn by the Mouseketeers, were named "Mouseke-ears." The show helped many children learn how to spell the word "mouse."

Also, gave the world Britney Spears, Justin Timberlake, Christina Aguilera, and Ryan Gosling.

HOUSE OF MOUSE



DATE: January 13, 2001—December 24, 2003

FUN FACT: The show's theme song was performed by Brian Setzer. Huey, Dewey, and Louie acted as a band during the show, with names such as The Quackstreet Boys, The Splashing Pumpkins, and Kid Duck.

MICKY MOUSE CLUBHOUSE



DATE: May 5, 2006—present

FUN FACT: Excluding Donald, this was the first time that the major characters have appeared on TV in CG.

Sexually Antagonistic Genes: Experimental Evidence

William R. Rice

Science, New Series, Vol. 256, No. 5062 (Jun. 5, 1992), 1436-1439.

Stable URL:

<http://links.jstor.org/sici?sici=0036-8075%2819920605%293%3A256%3A5062%3C1436%3ASAGEE%3E2.0.CO%3B2-I>

Science is currently published by American Association for the Advancement of Science.

Your use of the JSTOR archive indicates your acceptance of JSTOR's Terms and Conditions of Use, available at <http://www.jstor.org/about/terms.html>. JSTOR's Terms and Conditions of Use provides, in part, that unless you have obtained prior permission, you may not download an entire issue of a journal or multiple copies of articles, and you may use content in the JSTOR archive only for your personal, non-commercial use.

Please contact the publisher regarding any further use of this work. Publisher contact information may be obtained at <http://www.jstor.org/journals/aaas.html>.

Each copy of any part of a JSTOR transmission must contain the same copyright notice that appears on the screen or printed page of such transmission.

JSTOR is an independent not-for-profit organization dedicated to creating and preserving a digital archive of scholarly journals. For more information regarding JSTOR, please contact support@jstor.org.



<http://www.jstor.org/>
Wed May 4 00:49:34 2005

性别对抗



Testicular size

- Ration to body weight:
 - Chimpanzee : 0.3%
 - Gorillas : 0.03%
 - Human : 0.08%

For human

cdp.sagepub.com/content/16/1/47

Sign In to gain access to subscriptions and/or My Tools. Sign In | My Tools | Contact Us | HELP

SAGE journals Search all journals Advanced Search Search History Browse Journals

Current Directions in Psychological SCIENCE A Journal of the Association for Psychological Science

Home All Issues Subscribe RSS Email Alerts

Search this journal Advanced Journal Search »

Adaptation to Sperm Competition in Humans

Todd K. Shackelford and Aaron T. Goetz

+ Author Affiliations

Todd K. Shackelford, Florida Atlantic University, Department of Psychology, 2912 College Avenue, Davie, FL 33314; e-mail: tshackel@fau.edu.

Abstract

With the recognition, afforded by recent evolutionary science, that female infidelity was a recurrent feature of modern humans' evolutionary history has come the development of a unique area in the study of human mating: sperm competition. A form of male-male postcopulatory competition, sperm competition occurs when the sperm of two or more males concurrently occupy the reproductive tract of a female and compete to fertilize her ova. Males must compete for mates, but if two or more males have copulated with a female within a sufficiently short period of time, sperm will compete for fertilizations. Psychological, behavioral, physiological, and anatomical evidence indicates that men have evolved solutions to combat the adaptive problem of

« Previous | Next Article »
Table of Contents

This Article

doi:
10.1111/j.1467-8721.2007.00473.x
Current Directions in Psychological Science February 2007 vol. 16 no. 1 47-50

» Abstract Free
Full Text
Full Text (PDF)

- Services

- ▶ Email this article to a colleague
- ▶ Alert me when this article is cited
- ▶ Alert me if a correction is posted
- ▶ Similar articles in this journal
- ▶ Download to citation manager
- ▶ Request Permissions
- ▶ Request Reprints

- Citing Articles

- ▶ View citing article information
- ▶ Citing articles via Scopus (30)

Submit a Manuscript
Free Sample Copy
Email Alerts
RSS feed

+ More about this journal

- Other journals by APS

- ▶ Clinical Psychological Science
- ▶ Psychological Science
- ▶ Psychological Science in the Public Interest
- ▶ Perspectives on Psychological Science

society image
▶ Association for Psychological Science

FEEDBACK

END